

**Hisense** | COMMERCIAL  
DISPLAY



**WINDOW FACING**

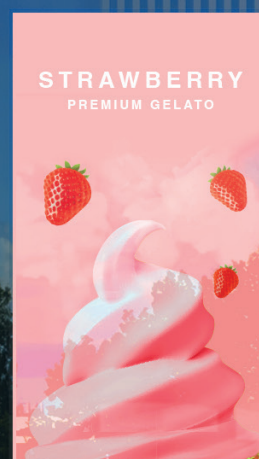
HIGH BRIGHTNESS DISPLAY

WH80E



# GELATO

PREMIUM QUALITY



## WINDOW FACING HIGH BRIGHTNESS DISPLAY

Hisense Commercial Display solutions are perfect for high volume retail and corporate installation. A combination of seamless design and enhanced brightness ensure digital content vividly stands out from the crowd. Hisense window facing high brightness displays are perfect for the delivery of high-visibility and high-impact messaging to a target audience. With 4000 nits ultra high brightness, the WH80E highlights your contents clearly beyond the window.





## 4K UHD Resolution

4K Ultra HD resolution delivers vivid, true-to-life colors and exquisite detail, providing an immersive viewing experience in any environment.



## Built-in VisionInfo

VisionInfo CMS platform provides a comprehensive solution for creating, editing, and organizing digital content with intuitive controls. It enables real-time content management and multi-screen control, accessible from any location through secure cloud-based access.



## 4000nits

Boasting 4000 nits brightness, the WH80E delivers exceptional visibility and stunning visual impact, ensuring your content captivates audiences in even the brightest commercial environments.

## Energy-Efficient Operation

Leveraging advanced low-power technology, the WH80E achieves 4000 nits brightness with significantly reduced energy consumption compared to conventional window lighting solutions at equivalent brightness levels.

## Android 11.0

The integrated Smart OS enables seamless installation of third-party applications without additional hardware. The system's synchronized screen technology enhances messaging delivery, audio integration, and multitasking capabilities for a unified digital experience.



android 11

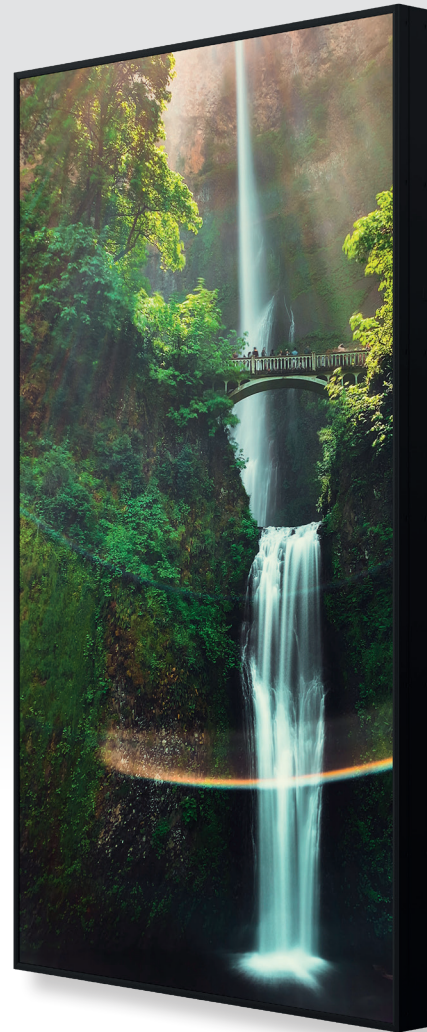


## Sleek Modern Design

The WH80E attracts attention with elegant design, featuring even bezels and slim design. Its flush-mounted design enables perfect wall alignment, optimizing space utilization in window display applications.

## WH80E

WINDOW FACING  
HIGH BRIGHTNESS DISPLAY



### 4K UHD Resolution

4K Ultra HD resolution revolutionizes visual experiences by delivering four times the pixel density of Full HD, resulting in stunningly sharp and lifelike images. This advanced resolution captures intricate details with remarkable precision, rendering textures, patterns, and fine elements with unparalleled clarity.



### Dynamic Contrast Ratio

The WH80E incorporates an advanced dynamic backlight system with intelligent dimming technology, achieving an exceptional contrast ratio of 1,000,000:1. The display delivers an unparalleled visual experience and immersion by showcasing deep blacks and bright whites, offering exceptionally refined image layers and detail representation.



### Sleek Modern Design

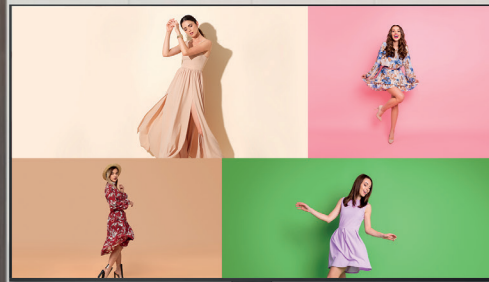
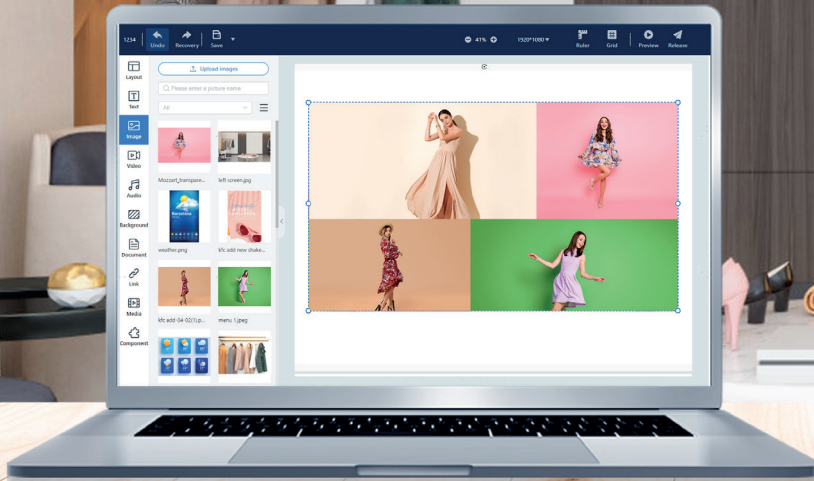
The WH80E attracts attention with elegant design, featuring even bezels and slim design. Its completely flat back ensures seamless wall alignment, maximizing space efficiency and delivering a polished, modern aesthetic for window display applications.



### 4000 nits

With an impressive 4000 nits of brightness, the WH80E delivers exceptional visibility and a powerful visual impact, ensuring your content remains vivid and captivating even in the brightest commercial environments. This reliability and performance make it perfect for impactful advertising and dynamic visual communication.

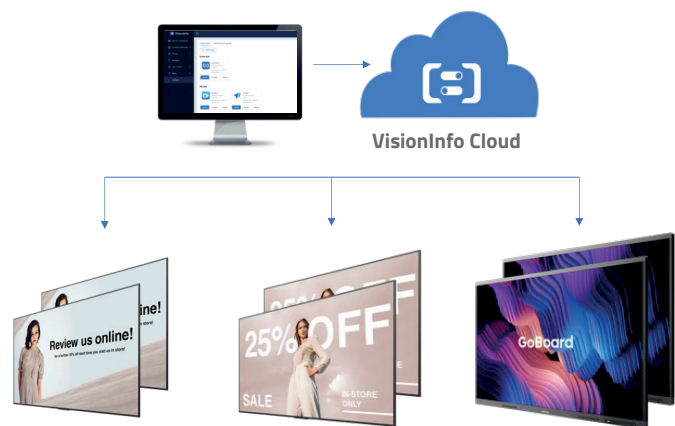




## Why Choose VisionInfo for the Window Facing - High Brightness Display

### Flexible and Scalable Solutions

VisionInfo from Hisense is our cloud-based digital signage software which is flexible, cost-effective, and infinitely scalable for users. VisionInfo includes a comprehensive CMS solution and advanced remote display management features. It provides users the freedom to edit and publish content while ensuring it looks great across all displays in a system. It is a powerful, effective and easy to use tool to manage content and control your displays at anytime from anywhere.



### Key Features

- Web browser editor UI
- Drag-and-drop visual editor
- Supports website integration
- Supports live streams
- Supports Office documents and PDF's
- Supports Widgets
- 4K resolution playback
- Offline content playback
- Program preview and publish approval
- Advanced program scheduler
- Custom template layouts
- Playback statistics



## The Complete Solution

# 1

### Intelligent Content Management

Effortlessly manage, customize and deliver your message with our intuitive CMS platform. Streamline content creation and engage your audience with our powerful, user-friendly platform.



Content Creation



Dynamic Scheduling



Content Publishing

# 2

### Enterprise-Grade Device Management

Empower your business with remote monitoring and control of displays on an installation. Safeguard your digital content with the robust security features of VisionInfo. Protect your displays and marketing content from cyber threats, ensure data privacy, and enjoy total peace of mind.



Remote Monitoring



Complete Control



Error Notifications

# 3

### Enhanced Data Management

Unlock the power of data with our advanced analytics and reporting feature within VisionInfo. Gain valuable insights, make data-driven decisions, and maximize the performance of your content.



Routine Automation



Data Analysis



Visual Reporting



### Mobile Device Management

- View the status of remote displays - online/offline, CPU and memory running status
- Real-time display control - power off, screen sleep/ wake up, reboot, switch signal source, screen lock/ unlock, USB disable/enable
- Remote desktop real-time monitoring
- Scheduled tasks to control displays - power On/ off, screen sleep/ wake up
- Remote software management - APP installation and uninstallation, remote OS Upgrade
- Display usage statistics



HIGH BRIGHTNESS DISPLAY



# DYNAMIC DISPLAYS

## FOR MAXIMUM VISIBILITY

Hisense window facing high brightness displays grab attention—day or night to maximise customer engagement. The Hisense WH80E ensures clear visibility even in bright daylight.

Learn More: [www.hisense-b2b.com](http://www.hisense-b2b.com) | Contact Us: [sales@hisense-b2b.com](mailto:sales@hisense-b2b.com)

LinkedIn: [@Hisense Commercial Display](#) | [@Hisense B2B Europe](#) | [@Hisense B2B USA](#) | [@Hisense B2B Australia](#)

**Hisense** | COMMERCIAL  
DISPLAY



## Specifications

### Display Panel

Backlight Type	DLED
Type	ADS
Size	55"
Resolution	3840 x 2160
Refresh rate	60Hz
Color Depth	1.07G (8 Bits+FRC)
Brightness(Typ.)	4000 cd/m <sup>2</sup> (w/o UV)
Static Contrast Ratio(Typ.)	1200:1
Dynamic Contrast Ratio(Typ.)	1,000,000:1
Response Time(Typ.)	8ms
Viewing Angle(Min.)	178° / 178°
Colour Gamut(Typ.)	72% NTSC
Haze	1%
Orientation	Landscape and Portrait
Lifetime	up to 50,000 hrs
Operation Hours	7 Day x 24Hour

### System

Operating System	Android 11
Processor CPU	ARM Cortex-A55 Quad core
Processor GPU	Mali-G52
Memory	2G DDR4
Storage	16G EMMC
Language	Simplified Chinese, English, French, German, Polish, Spanish, Russian, Italian, Finnish, Norwegian, Swedish, Hebrew, Arabic, Thai, Malay, Indonesian, Catalan

### Connectivity

WI-FI	2.4/5.0GHz dual,802.11a/b/g/n/ac
Bluetooth	BT5.1
Input	HDMI(2.0) x 3 USB2.0(A) x 1 RS232(RJ45) x 1 LAN(RJ45) x 1 IR(2.5mm) x 1 Ambient Light Sensor(2.5mm) x 1
Output	HDMI x 1 Audio(3.5mm) x 1 RS232(RJ45) x 1

### Physical

Bezel Color	Black
Dimension(W×H×D )	1232.6 x 704.6 x 57.9mm
Bezel width(T/L/R/B)	9.9mm(even)
VESA Mount	400 x 400mm, 4-M6 screw

### Power

Power Supply	AC 100~240V (50/60Hz)
Power Consumption (Typ.)	180W
Power Consumption (Max.)	380W
Standby Consumption	<0.5W (Standby Mode)

### Speaker

Built in speaker	10W x 2
------------------	---------

### Environment

Operating Temperature	0°~40°C
Operating Humidity	10%~80% Non-Condensing

### What's in the box

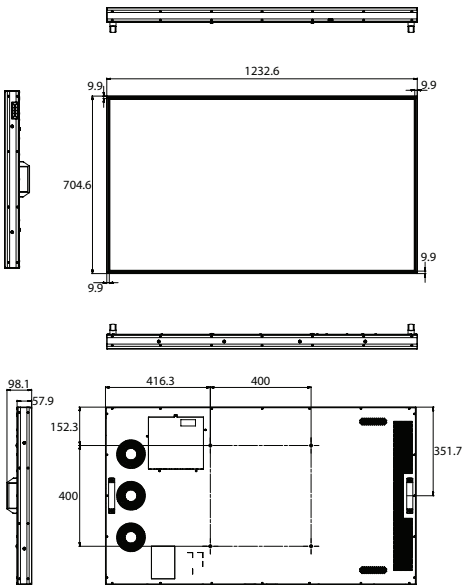
Standard	Quick Setup Guide
	Power Cord
	Remote Control & Batteries(AAA) x 2
	RS232 Converter Cable
	IR Cable
	Light Sensor Cable

### Certification

Standard	CB / CE / cTUVus / ERP / CEC / RCM
EMC	Class A
IP Rating	IP5X(Front)

### Dimensions

**55"** | 1232.6 x 704.6 x 57.9mm



Product specifications may vary per region, and specifications are subject to change. This material may include corporate names and trademarks of third parties which are the properties of the third parties respectively.



**Hisense** | COMMERCIAL  
DISPLAY